

THE ULTIMATE GUIDE

*To Living In*

WE LOVE OUR  
COMMUNITY  
AND I KNOW  
YOU WILL TOO

FARMINGDALE

*New Jersey*

*Courtesy Of*

*Dennis Mark*

REAL ESTATE



**kw** OCEAN LIVING  
KELLER WILLIAMS, REALTY

*Dennis Mark*  
REAL ESTATE

# *Knowing* FARMINGDALE, NJ



Farmingdale, NJ, known as "Today's Town...with Yesterday's Touch," is a quaint borough nestled in the heart of Monmouth County. Covering just over 0.5 square miles, this small town of about 1,300 residents blends small-town charm with suburban convenience. Originally founded in 1903, Farmingdale prides itself on strong community values, historic character, and proximity to both natural preserves and bustling metro areas.

Often mistaken as a rural outlier, Farmingdale is in fact a hidden gem for those looking to escape the chaos of city life while staying within reach of everything New Jersey offers—from the Jersey Shore to New York City.

# DEMOGRAPHICS

Understanding the demographics of Farmingdale can provide valuable insights into the community and its characteristics.



## POPULATION

Approximately 1,399 residents



## MEDIAN AGE

36 years old



## GENDER BREAKDOWN



45%



55%



## HOUSEHOLDS 582 households



413

NON-FAMILY

169



## MEDIAN HOUSEHOLD INCOME

\$97,574



## EDUCATION LEVELS

HIGH-SCHOOL  
GRADUATE

95%

BACHELOR'S  
DEGREE OR  
HIGHER

37%



## RACE AND ETHNICITY

83%

WHITE

11%

HISPANIC OR  
LATINO

3%

ASIAN

2%

AFRICAN  
AMERICA

1%

OTHER

# Local AUTHORITIES

Howell is governed by a Mayor and a Township Council. Key contacts include:

## ► MAYOR



James A. Daly

- Office Hours - Monday to Thursday: 8:30 AM – 4:00 PM
- Location : 11 Asbury Ave, Farmingdale, New Jersey, 07727-1202, US
- Appointments: Call (732) 938-4077
- Website: [farmingdaleborough.org](http://farmingdaleborough.org)

## ► TOWNSHIP COUNCIL MEMBERS

- Patricia A. Linszky, Erich Brand, Kaaren L. Corallo, George J. Dyevoich, Colleen Sagan, & Don H. Steinfeld.
- Contact: Appointments via (732) 938-4077
- Office Hours: Monday to Thursday: 8:30 AM – 4:00 PM

## ► FARMINGDALE TOWNSHIP MUNICIPAL BUILDING

- Address: 11 Asbury Ave, Farmingdale, New Jersey, 07727-1202, US
- Phone: (732) 938-4077
- Website: <https://farmingdaleborough.org>





# Township AUTHORITIES

Howell operates several township authorities that manage essential services:

## ► POLICE DEPARTMENT

- Chief: John Storrow
- Address: 300 Old Tavern Road, New Jersey 07731
- Phone: (732) 938-4575

## ► FARMINGDALE FIRE DISTRICT NO. 1

- Chief: Matt DePonti
- Address: 54 Main Street, Farmingdale, NJ 07727
- Phone: (732) 938-4785

## ► FARMINGDALE PUBLIC WORKS DEPARTMENT

- Director: Jeffery Patanjo
- Address: 11 Asbury Avenue, Farmingdale, NJ 07727
- Phone: (732) 938-4077



# *Local* UTILITIES

## ► GAS & ELECTRIC

JERSEY CENTRAL POWER & LIGHT (JCP&L)

- Website: [www.firstenergycorp.com](http://www.firstenergycorp.com)
- Phone: 1-800-662-3115

NEW JERSEY NATURAL GAS (NJNG)

- Website: [www.njng.com](http://www.njng.com)
- Phone: 1-800-221-0051

## ► WATER & SEWER

FARMINGDALE WATER DEPARTMENT

- Website: [www.farmingdalenj.gov](http://www.farmingdalenj.gov)
- Phone: (732) 449-2700

## ► CABLE/ INTERNET

OPTIMUM

- Website: [www.optimum.com](http://www.optimum.com)
- Phone: 1-866-200-7273

VERIZON FIOS

- Website: [www.verizon.com/fios](http://www.verizon.com/fios)
- Phone: 1-800-837-4966



# Schools in FARMINGDALE, NJ

Howell served by the Township Public Schools, which includes several elementary, middle, and high schools.

## FARMINGDALE ELEMENTARY SCHOOL

Address: 49 Academy Street, Farmingdale, NJ 07727

Phone: (732) 938-9611

Grades: PK-8

Highlights: A small, community-focused school with a strong emphasis on individualized attention.

Rating: ★★★★★☆☆☆☆☆







## **ARDENA ELEMENTARY SCHOOL**

Address: 355 Adelpia Road, Farmingdale, NJ 07727

Phone: (732) 751-2485

Grades: 3-5

Highlights: A nurturing environment with a focus on character development programs like "The Leader in Me."

Rating: ★★★★★☆☆☆☆



## **EDITH M. GRIEBLING ELEMENTARY SCHOOL**

Address: 130 Havens Bridge Road, Farmingdale, NJ 07727

Phone: (732) 751-2487

Grades: PK-2

Highlights: Early childhood education with a strong integration of technology and parent involvement.

Rating: ★★★★★☆☆☆☆







## HOWELL TOWNSHIP MIDDLE SCHOOL NORTH

Address: 501 Squankum Yellowbrook Road, Farmingdale, NJ 07727

Phone: (732) 919-0095 | Grades: 6-8

Highlights: A strong academic program with a focus on student progress and a variety of extracurricular activities.

Rating: ★★★★★★☆☆☆☆



## HOWELL HIGH SCHOOL

Address: 405 Squankum Yellowbrook Road, Farmingdale, NJ 07727

Phone: (732) 919-2131 | Grades: 9-12

Highlights: A comprehensive high school offering a range of Advanced Placement courses, extracurricular activities, and a strong athletic program.

Rating: ★★★★★★★★☆☆





# Neighborhoods in **FARMINGDALE, NJ**



## **FARMINGDALE VILLAGE**

- Rating: 8/10
- Character: Historic charm with tree-lined streets and a tight-knit community atmosphere.
- Best for: First-time homebuyers and those seeking a small-town feel.



## **SOUTH FARMINGDALE**

- Rating: 8/10
- Character: Established neighborhood with a mix of mid-century homes and newer constructions
- Best for: Families and professionals desiring proximity to schools and parks.



## **WOODWARD BOULEVARD**

- Rating: 7.5/10
- Character: Spacious lots with mature trees, offering a suburban feel.
- Best for: Single-family homes with generous lot sizes.



## SECATOOGUE STREET

- Rating: 7/10
- Character: Quiet, residential area with a mix of ranch-style and two-story homes.
- Best for: Retirees and families desiring a peaceful environment.



## FOUR SEASONS AT COLTS FARM

- Rating: 9/10
- Character: 55+ active adult community offering low-maintenance living.
- Best for: Retirees seeking a vibrant community with amenities.



## LENOX HILLS

- Rating: 8.5/10
- Character: Tree-lined streets with a mix of older and mid-century homes, some modernized with luxury features.
- Best for: Families seeking a peaceful suburban living with quick access to New York City.



## FARMINGDALE WEST

- Rating: 7/10
- Character: A calm neighborhood with a mix of ranch-style and two-story homes.
- Best for: Retirees and families seeking a peaceful environment.



# 55+ Community is FARMINGDALE, NJ



## FOUR SEASONS AT COLTS FARM

- Rating: 9/10
- Homes: ~111 single-family homes.
- Style: 2-4 bedrooms, 2-3 bathrooms, 2-car garages; homes up to 3,033 sq. ft.
- HOA: Approximately \$250/month (covers lawn care, snow removal, and amenities)
- Amenities: Clubhouse, fitness center, outdoor pool, tennis courts, bocce ball, walking trails
- Vibe: Active, social, and community-oriented with a focus on resort-style living



## REGENCY AT ALLAIRE

- Rating: 8/10
- Homes: ~98 single-family homes (under construction)
- Style: 2 stories, 2–5 bedrooms, 2–4 bathrooms, 2-car garages; homes range from 1,826 to 2,679 sq. ft.
- HOA: Approximately \$350/month (covers lawn care, snow removal, and amenities)
- Amenities: Clubhouse, fitness center, outdoor pool, tennis courts, pickleball, bocce ball, scenic lakes and ponds
- Vibe: Modern, tranquil, and nature-oriented community



## EQUESTRA AT COLTS NECK CROSSING

- Rating: 8.5/10
- Homes: ~483 single-family homes
- Style: 2–4 bedrooms, 1.5–3 bathrooms, 2-car garages; homes range from 1,453 to 2,651 sq. ft.
- HOA: Approximately \$375/month (includes lawn maintenance, snow removal, and amenities)
- Amenities: 18,400 sq. ft. clubhouse, indoor pool, fitness center, tennis courts, bocce ball, shuffleboard, horseshoe pits, putting green, walking trails, playground
- Vibe: Welcoming, active, and social community with a variety of clubs and activities



# *Outdoor Recreation*

## **FARMINGDALE, NJ**

### **Public Parks & Fields**



#### **SOLDIER MEMORIAL PARK**

Hosting local youth leagues, large-scale tournaments, and community events.



#### **THE BALL PARK**

Privately owned recreational complex perfect for family entertainment.

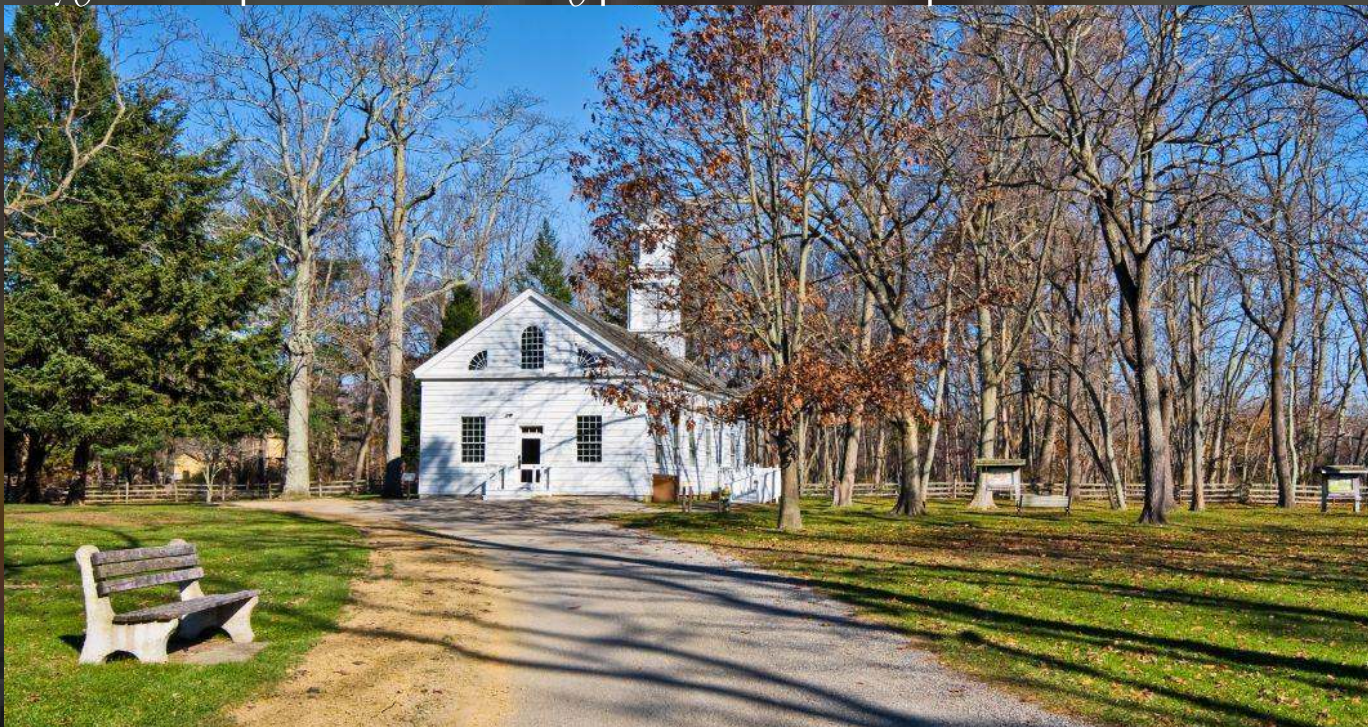






## ALLAIRE STATE PARK

Playground, sports fields, walking paths, and event spaces



## MANASQUAN RIVER GREENWAY

A scenic area with multiple access points, ideal for hiking, birdwatching, and enjoying nature





# Golf Courses



## **HOWELL PARK GOLF COURSE**

Public 18-hole, par 72 with 6,964 yards from the blue tees.



## **CRUZ GOLF COUNTRY CLUB**

this challenging public course spans over 5,000 yards.



## **SPRING MEADOW GOLF COURSE**

A public 18-hole course established in 1928, offering a traditional layout.





# Annual Festivals

## FARMINGDALE, NJ



### HOWELL FARMERS MARKET

- is popular seasonal market features fresh local produce, homemade baked goods, handmade crafts, flowers, live music, and cooking demonstrations.



### HOWELL TOWNSHIP FALL FESTIVAL & CLASSIC CAR SHOW

- A lively fall celebration with food trucks, local vendors, beer/wine tent, live music, bonfires, and bounce houses







## INDEPENDENCE DAY CELEBRATION

- most anticipated township events with fireworks and community pride.



## ALLAIRE VILLAGE FLEA MARKETS & CRAFT SHOWS

- Held throughout the year, including early summer, mid-summer, late summer, fall, and late fall.



## ROLLING IRON ANTIQUE AUTO SHOW

- Displays of antique vehicles and access to Allaire Village.







## FARMINGDALE FALL STREET FAIR

- Crafts, fine art, flea market vendors, and community engagement.



## EARTHVIBES MUSIC & WELLNESS FESTIVAL

- Live music, yoga, sustainability workshops, and camping options.



## ANNUAL MEMORIAL DAY PARADE

- Honoring veterans and fostering community spirit.





# Best Places to

## EAT, DRINK & ENTERTAIN Restaurants



### CONNIE'S RESTAURANT



- Address: 63 Main St, Farmingdale, NJ 0772
- Phone: (732) 938-9837
- Rating: 9/10
- Known for: T Classic American breakfast and lunch since 1972
- Signature Dish: Homemade pancakes, omelets, and daily lunch specials



### BRUNO'S PIZZA



- Address: 37 Main St, Farmingdale, NJ 07727
- Phone: (732) 938-4844
- Rating: 8.5/10
- Known for: Traditional Italian-style pizza and subs
- Signature Dish: Margherita pizza, meatball subs.



## L'OLIVIA PIZZERIA & RISTORANTE



- Address: 1175 NJ-33, Suite 6, Farmingdale, NJ 07727
- Phone: (732) 256-4227
- Rating: 9.5/10
- Known for: s classic thin-crust pizza, authentic Italian entrées.
- Signature Dish: Thin-Crust Margherita Pizza

## Caf é s



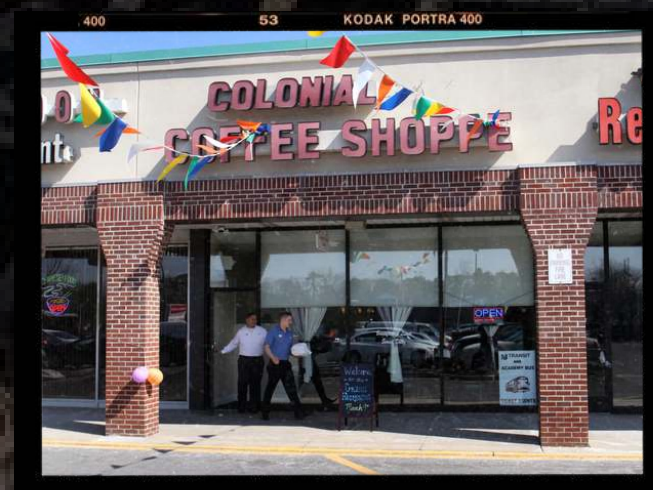
### 1ST CUP COFFEE



- Address: 36 Main St, Farmingdale, NJ 07727
- Phone: (732) 938-2020
- Rating: 9.5/10
- Known for: Cozy atmosphere with specialty coffees and pastries
- Signature Drink: Espresso, cappuccino, seasonal lattes



### COLONIAL COFFEE SHOPPE



- Address: 4023 US-9, Howell, NJ 07731
- Phone: (732) 367-0266
- Rating: 8.5/10
- Known for: Homemade breakfasts, signature home fries, and seasonal coffee
- Signature Drink: Iced coffee with whipped cream and caramel



# Bars and Pubs



## TOM'S TAVERN



- Address: 85 Asbury Rd, Farmingdale, NJ 07727
- Phone: (732) 938-9060
- Rating: 9/10
- Known for: Historic dive bar with a laid-back vibe.
- Signature Drink: Cold beers, classic cocktails



## MULLIGAN'S BAR & GRILL



- Address: 203 Squankum Rd, Farmingdale, NJ 07727
- Phone: (732) 938-6066
- Rating: 8.5/10
- Known for: Casual dining with a full-service bar
- Signature Dish: burgers, wings, and daily specials

# Shopping



## SWEET!



- Address: 8 Main St, Farmingdale, NJ 07727
- Rating: 9/10
- Known for: Vintage candies and homemade chocolates
- Signature Items: Saltwater taffy, fudge, nostalgic sweets



## SHOP N BAG



- Address: 80 Main St, Farmingdale, NJ 07727
- Rating: 8.5/10
- Known for: Family-owned grocery store with local produce
- Signature Items: Fresh baked goods, deli meats



# *Sights & Attractions* **FARMINGDALE, NJ**

Farmingdale is rich in natural beauty and offers several attractions for residents and visitors alike.

## **Howell Main Street Historic District**



Rating: ★★★★★★★★★★☆☆

Known for: Small-town charm, historic buildings.

# Shark River Park



Rating: ★★★★★★☆☆

Known for: Shark River Park offers an inviting and peaceful escape with its wide range of outdoor activities, including hiking trails, playgrounds, and fishing spots





# The Crossroads of the American Revolution National Heritage Area



Rating: ★★★★★ ★★☆☆☆

Known for: Howell's location within the Crossroads of the American Revolution National Heritage Area makes it a prime spot for history enthusiasts

# Top Places to Br

## CHILDREN FOR ENTERTAINMENT



### ALLAIRE STATE PARK

- Address: 4265 Atlantic Ave, Farmingdale, NJ 07727
- Known for: Historic village, nature trails, and the Pine Creek Railroad offering scenic train rides.

Rating: ★★★★★★☆☆



### CLIMBZONE HOWELL

- Address: 5369 U.S. 9, Howell, NJ 0773
- Phone: (732) 364-5050
- Known for: ClimbZone Howell is an indoor climbing adventure center offering over 68 themed climbing walls,

Rating: ★★★★★★☆☆







## CAMP SACAJAWEA

- Address: 242 Adelpia Rd, Farmingdale, NJ 07727
- Known for: Summer day camp with swimming, archery, and outdoor adventures.

Rating: ★★★★★★★★☆☆



## SAMROCK STABLES

- Address : 104 Peskin Rd, Farmingdale, NJ 07727
- Known for: Interactive farm programs and horseback riding experiences.

Rating: ★★★★★★★★☆☆





# Best Places for Date Night & Adult Beverages



## WOODY'S ROADSIDE TAVERN



- Signature burgers, craft beer selection, weekly trivia nights, and a welcoming local crowd.



## THE CABIN RESTAURANT



- Happy hour specials, live country music, wings, and hearty American eats.





## THE RAVEN AND THE PEACH (UPSCALE OPTION)



- Creative cocktails, fine wine, fresh seafood, and ambiance.



## REEF & BARREL



- Beachy-chic restaurant/bar with fresh seafood and tropical cocktails.

*Dennis Mark*  
REAL ESTATE

KELLERWILLIAMS  
Luxury | **KW MILITARY**  
**KW OCEAN LIVING**  
KELLERWILLIAMS. REALTY



# Best-Rated Small Businesses

## FARMINGDALE, NJ



### TULIP TREE CAFÉ

Type: Farm-to-table café offering fresh, locally sourced meals.

- Highlights: Indoor/outdoor dining, catering services, and a commitment to sustainable practices.
- Ratings: Google: 4.8★ | Yelp: 4.5★ | Facebook: 4.9★
- Website: [tuliptreecafe.com](http://tuliptreecafe.com)



### CONNIE'S RESTAURANT

Type: Classic American diner known for hearty breakfasts.

- Highlights: Friendly atmosphere with extensive breakfast options.
- Ratings: TripAdvisor: 4.5★ | Google: 4.6★ | Yelp: 4.2★
- Location: 63 Main St, Farmingdale, NJ



### THE LOCAL DINER & BAKERY

Type: Homestyle diner with a bakery offering fresh pastries.

- Highlights: "Sunday Breakfast" specials and homemade baked goods.
- Ratings: Google: 4.7★ | Yelp: 4.5★ | Facebook: 4.8★
- Website: [thelocaldb.com](http://thelocaldb.com)



### THE FARM

Type: Local farm stand providing fresh produce and artisanal goods.

- Highlights: Seasonal fruits, vegetables, and community events.
- Ratings: Google: 4.9★ | Yelp: 5.0★ | Facebook: 4.9★
- Location: 60 Birdsall Rd, Farmingdale, NJ 07727





## **S & F HONEY FARM**

Type: Family-owned honey producer offering various honey products.

- Highlights: Raw honey, beeswax products, and educational tours.
- Ratings: Google: 5.0★ | Yelp: 5.0★ | Facebook: 5.0★
- Location: 57 Amwell Rd, Flemington, NJ 08822



## **HIGH END DETAIL**

Type: Mobile auto detailing service known for meticulous work.

- Highlights: Interior and exterior detailing with eco-friendly products.
- Ratings: Google: 5.0★ | Yelp: 5.0★ | Facebook: 5.0★
- Location: Asbury Park, NJ | [highenddetailnj@gmail.com](mailto:highenddetailnj@gmail.com)



## **THE SOCIAL LEAF**

Type: Boutique shop offering handcrafted goods and gifts.

- Highlights: Locally made products, workshops, and community events.
- Ratings: Google: 4.8★ | Yelp: 4.7★ | Facebook: 4.9★
- Location: 334 Atlantic City Blvd, Toms River, NJ 08757



## **PROFICIENT PLUMBING**

Type: Local plumbing service with a reputation for reliability.

- Highlights: Emergency services, installations, and maintenance.
- Ratings: Google: 4.9★ | Yelp: 4.8★ | Facebook: 4.9★
- Location: 482 Jackson Ave, Brick Township, NJ 08723



## **MANFREDI HEATING AND AIR CONDITIONING**

Type: HVAC service provider specializing in residential systems.

- Highlights: Installation, repair, and maintenance with prompt service.
- Ratings: Google: 4.8★ | Yelp: 4.7★ | Facebook: 4.8★
- Location: 12 Anthony Way, Farmingdale, NJ 07727

*What's So Great About*

# FARMINGDALE, NJ


## *Small-Town Charm with Big Community Heart*

Farmingdale is affectionately called "The Town with a Heart"—and for good reason. With a population of just over 1,300 residents, you'll find friendly neighbors, community events like summer concerts in the park, and an old-fashioned Main Street filled with local businesses that give it a true hometown feel.

## *Excellent Location with Easy Commutes*

Though it feels quiet and tucked away, Farmingdale is just minutes from the Garden State Parkway and Route 33, making it an ideal spot for commuters to NYC, Philadelphia, or the Jersey Shore. You get the best of both worlds: peaceful living with urban access.

*Dennis Mark*  
REAL ESTATE

KELLERWILLIAMS  
Luxury |  **KW MILITARY**  
**KW OCEAN LIVING**  
KELLERWILLIAMS. REALTY





## *Beautiful Parks & Outdoor Recreation*

Farmingdale is a nature lover's dream. It borders the expansive Allaire State Park, offering hiking, biking, horseback riding, camping, and even a historic village and steam train. Nearby Howell Park Golf Course and Manasquan Reservoir offer even more ways to enjoy the outdoors.



## *Access to Top-Rated Schools*

Farmingdale families benefit from quality public school options through the Howell Township School District and Freehold Regional High School District. There are also nearby private school options and early learning centers for younger children.



## *Rich Local History & Character*

Founded in the 1800s, Farmingdale blends small-town Americana with a strong sense of heritage. Its preserved buildings, community churches, and long-standing local shops reflect a town that respects its roots while embracing the future.

# I HOPE YOU ENJOYED YOUR TOUR OF *Farmingdale, NJ*

Farmingdale, NJ may be small in size, but it offers a lifestyle full of warmth, charm, and accessibility. Whether you're starting a family, downsizing for retirement, or just looking for a peaceful place to call home—Farmingdale welcomes you with open arms. If you have more questions or want to explore homes in the area, I'd love to help you take the next step!

## DISCLAIMER

This guide is for informational purposes only and reflects the most accurate data available at the time of writing. All prices, services, and community details are subject to change. Readers are advised to conduct their own research, verify all information independently, and consult with local professionals before making any decisions related to moving or purchasing property. We hold no liability for decisions made based on this content.

*Dennis Mark Interdonato*

REALTOR ASSOCIATE

PSA, RENE, ABR ePRO, SFR,  
Certified Divorce Real Estate Expert | CDRE®

NJAR Circle of Excellence 2022 - 2024

NJ Realtors 2025 State Selection - Communications Committee

MOMLS 2025 Selection - Public Relations Committee

MOMLS 2025 Selection - Grievance Committee





# THANK YOU!

*I would love the opportunity to work with you, and I truly look forward to building our relationship together*

Direct: 732-598-2672 Office: 848-241-6955  
dennismark@kw.com | dennismarkrealestate.com

Keller Williams Realty Ocean Living  
1513 Richmond Ave  
Point Pleasant, NJ 08742

KELLERWILLIAMS  
Luxury | **kw MILITARY**  
**KW OCEAN LIVING**  
KELLERWILLIAMS. REALTY

*Dennis Mark*  
REAL ESTATE



@DENNISMARKREALESTATE



@REDWHITEANDREALESTATE



@DENNISMARKREALESTATE



@DENNISMARKKW



@DENNISMARKINTERDONATO