



# New & Exciting Homes

We are offering **Single Family Homes** on generous homesites from 2 to 5 bedroom models up to 3,500 Square Feet of Living Space.

# Location

We have everything you could possibly need for daily living, plus the entire **Palm Beach Gardens** region right at your fingertips. Enjoy all the amenities and sophistication of a major city but set in a town with a laid-back brand of **luxury** all on its own. Located just north of West Palm Beach, Palm Beach Gardens is just a few minutes inland from the coast, but still close enough to smell the ocean air.

It's the hometown of the **PGA headquarters**, and golfers nationwide come here to play some of the best courses in the world. For shoppers, Palm Beach Gardens boasts some incredible options, including **The Gardens Mall's** high-end department stores and runway-ready boutiques, as well as the open-air **Downtown at the Gardens**, which offers more than 50 boutiques, restaurants and a movie theater.



# Lifestyle

The breadth and quality of community amenities is truly breathtaking. You will discover worlds-within-worlds of entertainment, wellness and discovery, with experiences ranging from manicured green spaces and trails to untouched nature, [championship golf](#) right next door, a working farm and more.



# Golf Resorts

[Panther National](#) is the first modern golf and lifestyle community built for a new generation, a world catering to the select individuals who will call it home. Ultra-modern amenities surround a championship golf course co-designed by Jack Nicklaus and Justin Thomas, redefining the private golf club lifestyle.

The [Sandhill Crane Golf Club](#) is one of the only golf courses in Florida that winds through natural preserved and wetlands areas. It plays to 6,500 yards through southern pines, palm trees and marsh land, while making defined elevation changes – creating spectacular and unforgettable views. It's outstanding south Florida golf, while still being extremely affordable!



**JACK NICKLAUS & JUSTIN THOMAS CO-DESIGNED 18-HOLE CHAMPIONSHIP COURSE & TRAINING FACILITY AT PANTHER NATIONAL.**



# Amenities

- Covered Entry
- Event Hall
- Clubroom
- Covered Outdoor Dining
- Fitness Center with Gym-Aerobics Areas
- Men's & Women's Locker rooms
- Kid's room
- 2 Offices
- Commercial Kitchen
- Outdoor Walkways
- Resort-style Pool with Waterfalls
- Expansive Pool Deck with Seating Areas
- Terraced Seating
- 8-Person Spa
- Poolside Cabanas and Pavilions
- Kids Zone / Splash pad
- 2-Lane Lap Pool
- 8 Tennis Courts
- 6 Pickleball Courts
- 2 Tot Lots
- Fire Pit & Seating Area
- 2 Event Lawns
- Heated Swimming Pool





# Personalize Your Home



Configure key areas of your home based on what's most important to you. From the kitchen to the bath, our homes offer flexibility that fits your lifestyle.



# Included Features within our Classic Series

## QUALITY CONSTRUCTION FEATURES

- Steel-reinforced concrete block construction
- Professionally engineered roof trusses with hurricane tie-downs for wind protection
- Impact resistant windows and doors throughout

## INTERIOR FEATURES

- Voluminous 9'4" ceilings on first floor and second floor (Fifth Avenue & Riverwalk). Raised 10'8" ceilings on Mainstay, Mystique & Prestige
- 8' 2-panel smooth finish white interior doors
- 5 1/2" baseboards and 3 1/2" door casings throughout
- Upgraded Tile flooring in the Foyer, Kitchen, Café/Dining (per plan), Gathering room, Owner's Bath, Secondary Baths, Utility Room, Halls (per plan) and HVAC closets.
- Schlage® decorative chrome interior door hardware
- Gathering room tray ceiling with crown molding (Mainstay, Mystique & Prestige)
- Owner's Bedroom tray ceiling with crown molding
- Orange Peel wall texture
- Sherwin-Williams® interior paint
- Interconnected smoke and carbon monoxide detectors with battery backup
- Modern White open stair railing (per plan)

## IMPRESSIVE KITCHEN FEATURES

- Upgraded MasterBrand® 42" Cabinets with crown. Includes Pulte Planning Center lower cabinets to match (per plan)
- KitchenAid stainless steel appliances including: microwave, gas range & dishwasher
- KitchenAid Refrigerator
- Sterling® stainless steel 50/50 undermount kitchen sink
- Silestone or Granite 3cm countertops
- Moen® Integra single handle faucet with pull-out sprayer in chrome
- Kitchen island
- Pantry with shelving system
- Heavy duty 1/2 HP garbage disposal with Air Switch

## LUXURIOUS BATH FEATURES

- Owner's Bath includes full shower with upgraded tile surround, tile shower floor and glass enclosure
- Silestone or Granite 3cm countertops throughout and double sink vanity in owner's bath
- Upgraded MasterBrand® cabinets throughout
- Moen® decorative chrome fixtures and 8" faucets in all baths
- Seagull® chrome light fixtures
- Sterling® elongated toilets throughout
- Pedestal sink in powder room with mirror (per plan)

## ENHANCED EXTERIOR FEATURES

- Beautiful covered Lanai
- Professionally landscaped and sodded homesite with irrigation in front, side and rear
- Easy to maintain stucco exterior (per elevation)
- Double-pane, low E (high efficiency) screened windows
- 8' Exterior doors and 8' Garage doors with LiftMaster Garage Door Opener
- Therma-Tru® weather-stripped fiberglass insulated front door (per elevation)
- Schlage® chrome front door handle set with deadbolt
- Decorative exterior coach lights (per elevation)
- Boral® concrete roof tile (accents of metal roof in modern elevations)
- Decorative brick paver driveway
- Aluminum gutters and downspouts whole house
- Exterior waterproof electrical outlets
- Exterior rear floodlights on back of home and soffit outlets on front of home

## ENERGY EFFICIENT FEATURES

- Rinnai Tankless water heater
- Lennox® central air conditioning and heating system
- Honeywell® programmable thermostat
- Whirlpool® Washer & Dryer
- White PGT Winguard® Low-E, single-hung, insulated aluminum windows
- R-30 attic insulation

## SMART HOME TECHNOLOGY

- Smart Home 2.0 Thermostat and Doorbell Camera
- Structured media enclosure with dedicated outlet for future equipment
- One CAT6/RG6 combo jack at gathering room
- One CAT6 pre-wired wireless access point in ceiling per finished floor area
- USB outlet in Kitchen and Owner's bedroom
- Divosta Smart Home: every home is prewired for connectivity giving you the flexibility to make your home as smart as you want it to be

## EXCLUSIVE FEATURES

- Unmatched 1,2,5 & 10-year Pulte Protection Plan, transferable limited warranty
- Homeowner meetings and walkthroughs at various stages of the build process: Introduction, Confirmation, and Celebration
- Financing through Pulte Mortgage LLC
- PGP Title partnership ensures seamless closing transaction



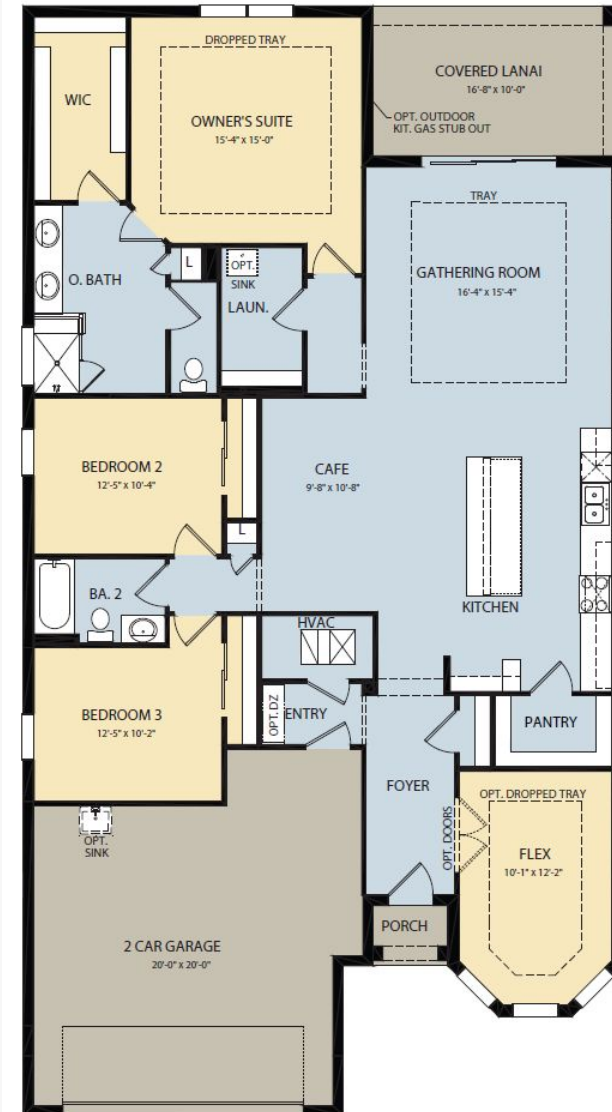
# Mainstay

2,095 – 2,123 A/C Sq. Ft. | 3 Bedrooms | 2 Bath

The **Mainstay** new home gives individuals and families what they're looking for in single-story living. Entertaining is made easy with a seamlessly connected kitchen, café, gathering room, and covered lanai. A flex room provides a variety of options for a den or a home office. Enjoy everyday storage with a huge pantry and extra garage space. Finally, retreat to your private owner's suite oasis.



## Classic Series





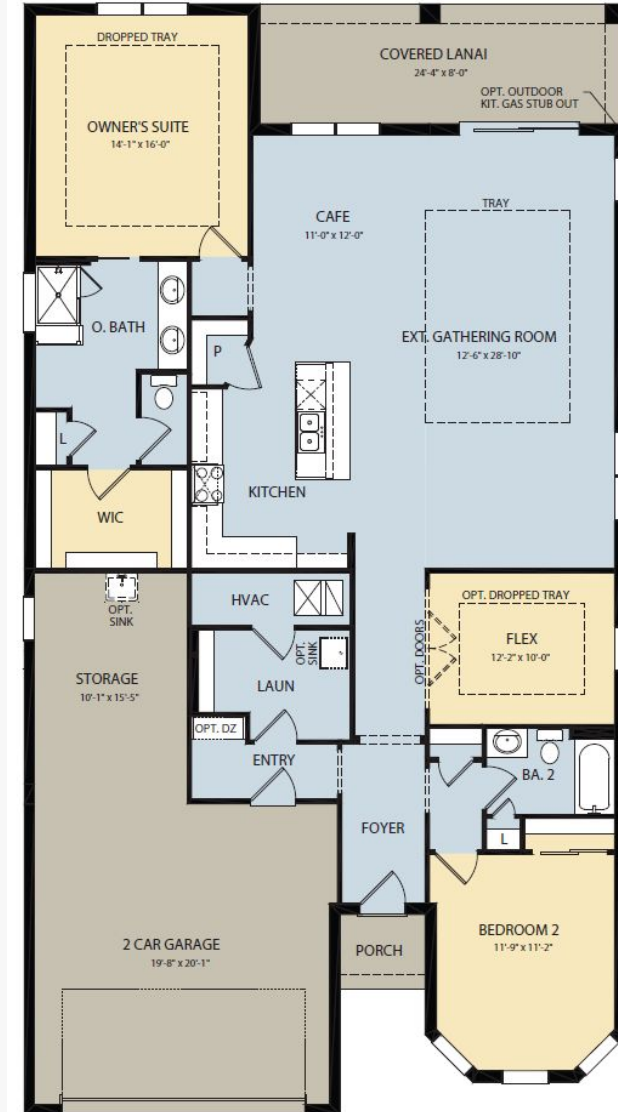
# Mystique

2,019 – 2,261 A/C Sq. Ft. | 2 – 4 Bedrooms | 2 – 3 Baths

The **Mystique** home design is a versatile floor plan that offers 2-4 bedrooms and 2-3 bathrooms, well-suited for families and empty-nesters alike. The beautiful one-story home design features an open kitchen with a center island that overlooks a bright gathering room, perfect for entertaining and everyday living. The 2-car garage includes an expanded area ideal for a golf cart or extra storage.



## Classic Series



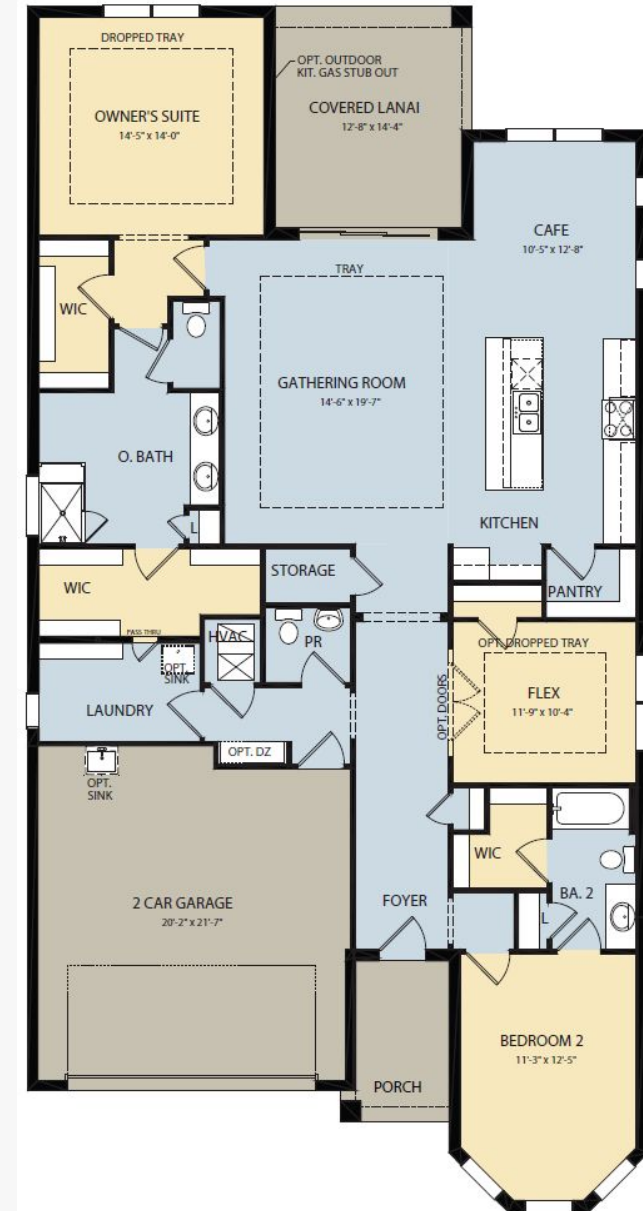
# Prestige

2,080 – 2,114 A/C Sq. Ft. | 2 – 3 Bedrooms | 2.5 Baths

The **Prestige** home design has ample space with up to 3 bedrooms and 2.5 bathrooms. The private owner's suite features a large bathroom with dual walk-in closets. Adjacent to the owner's suite, enjoy the open-concept connected kitchen, café, gathering room, and covered lanai. Upgrade your indoor-outdoor entertainment with the optional covered lanai extension and sliding glass door at the café.



## Classic Series



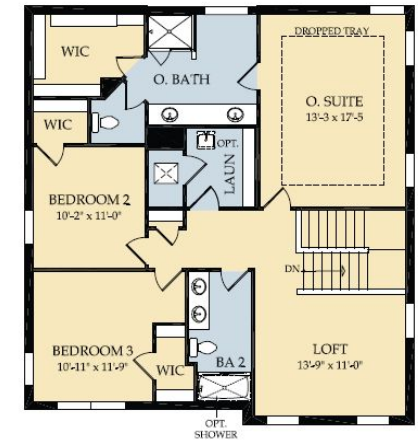
# Fifth Avenue

2,523 A/C Sq. Ft. | 3 – 4 Bedrooms | 2.5 Baths

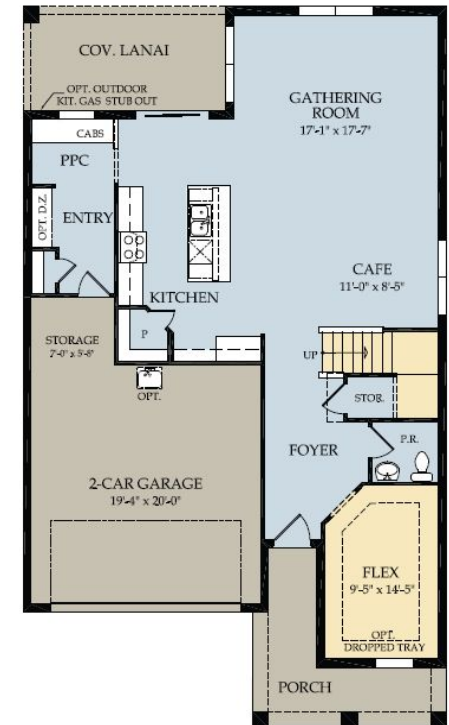
The planning that went into the **Fifth Avenue** shows. The wide Everyday Entry™ connects to a Pulte Planning Center®, and the kitchen (with central island and large corner pantry) opens to an outdoor living area, café space, and naturally lit gathering room – giving families lots of options. An upstairs loft is well placed, so kids can play without disturbing the serenity of the Owner's Suite.



Classic Series



First Floor



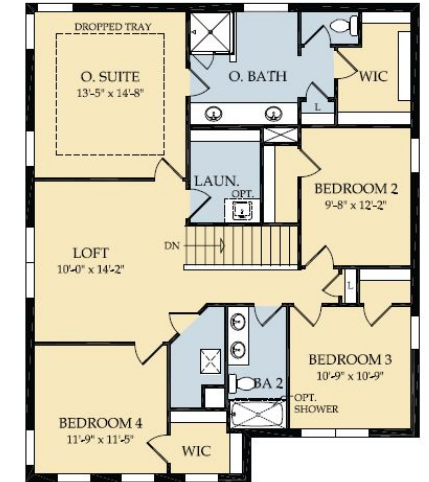
# Riverwalk

2,679 – 2,704 A/C Sq. Ft. | 4 Bedrooms | 2.5 – 3.5 Baths

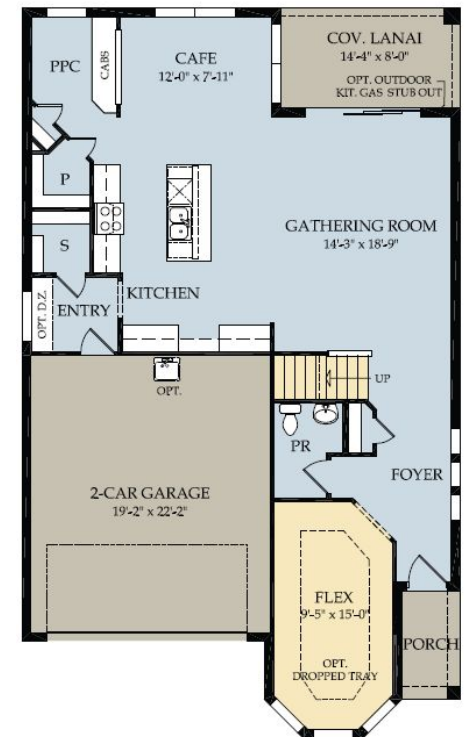
Every square foot is optimized in the **Riverwalk**. Downstairs includes a huge gathering room, sunlit café, covered lanai, and kitchen with island. Flex space off the foyer offers a cozy den or study, and a Pulte Planning Center® helps you keep life organized. Upstairs, a loft space allows for family fun, and a large Owner's Suite is well separated from the other three bedrooms.



## Classic Series



Second Floor



First Floor

# Included Features within our Estate Series

## QUALITY CONSTRUCTION FEATURES

- Steel-reinforced concrete block construction
- Professionally engineered roof trusses with hurricane tie-downs for wind protection
- Impact resistant windows and doors throughout

## INTERIOR FEATURES

- Voluminous 10'8" ceilings on all single-story plans. Raised 10' ceilings on Whitestone and Millstone with 9'4 on 2<sup>nd</sup> floor.
- 8' 2-panel smooth finish white interior doors
- 5 1/4" baseboards and 3 1/4" door casings throughout
- Upgraded Tile flooring in the Foyer, Kitchen, Café/Dining (per plan), Gathering room, Owner's Bath, Secondary Baths, Utility Room, Halls (per plan) and HVAC closets.
- Schlage® decorative chrome interior door hardware
- Gathering room or Dining tray ceiling with crown molding (per plan. Not applicable to Whitestone)
- Owner's Bedroom tray ceiling with crown molding
- Orange Peel wall texture
- Sherwin-Williams® interior paint
- Interconnected smoke and carbon monoxide detectors with battery backup
- Modern White open stair railing (per plan)

## IMPRESSIVE KITCHEN FEATURES

- Upgraded MasterBrand® 42" Cabinets with crown. Includes Pulte Planning Center lower cabinets to match (per plan)
- Built-In KitchenAid stainless steel appliances including: microwave, gas cooktop, wall oven & dishwasher
- Sterling® stainless steel 50/50 undermount kitchen sink
- Silestone or Granite 3cm countertops
- Moen® Integra single handle faucet with pull-out sprayer in chrome
- Kitchen island
- KitchenAid Refrigerator
- Pantry with shelving system
- Heavy duty 1/2 HP garbage disposal with Air Switch

## LUXURIOUS BATH FEATURES

- Owner's Bath includes full shower with upgraded tile surround, tile shower floor and glass enclosure
- Silestone or Granite 3cm countertops throughout and double sink vanity in owner's bath
- Upgraded MasterBrand® cabinets throughout
- Moen® decorative chrome fixtures and 8" faucets in all baths
- Seagull® chrome light fixtures
- Sterling® elongated toilets throughout
- Pedestal sink in powder room with mirror (per plan)

## ENHANCED EXTERIOR FEATURES

- Beautiful covered Lanai
- Professionally landscaped and sodded homesite with irrigation in front, side and rear
- Easy to maintain stucco exterior (per elevation)
- Double-pane, low E (high efficiency) screened windows
- 8' Exterior doors and 8' Garage doors with LiftMaster Garage Door Opener
- Therma-Tru® weather-stripped fiberglass insulated front door (per elevation)
- Schlage® chrome front door handle set with deadbolt
- Decorative exterior coach lights (per elevation)
- Boral® concrete roof tile (accents of metal roof in modern elevations)
- Decorative brick paver driveway
- Aluminum gutters and downspouts whole house
- Exterior waterproof electrical outlets
- Exterior rear floodlights on back of home and soffit outlets on front of home

## ENERGY EFFICIENT FEATURES

- Rinnai Tankless water heater
- Lennox® central air conditioning and heating system
- Honeywell® programmable thermostat
- Whirlpool® Washer & Dryer
- White PGT Winguard® Low-E, single-hung, insulated aluminum windows
- R-30 attic insulation

## SMART HOME TECHNOLOGY

- Smart Home 2.0 Thermostat and Doorbell Camera
- Structured media enclosure with dedicated outlet for future equipment
- One CAT6/RG6 combo jack at gathering room
- One CAT6 pre-wired wireless access point in ceiling per finished floor area
- USB outlet in Kitchen and Owner's bedroom
- DiVosta Smart Home: every home is prewired for connectivity giving you the flexibility to make your home as smart as you want it to be

## EXCLUSIVE FEATURES

- Unmatched 1,2,5 & 10-year Pulte Protection Plan, transferable limited warranty
- Homeowner meetings and walkthroughs at various stages of the build process: Introduction, Confirmation, and Celebration
- Financing through Pulte Mortgage LLC
- PGP Title partnership ensures seamless closing transaction



# Stardom

2,269 – 2,361 A/C Sq. Ft. | 2 – 3 Bedrooms | 2.5 – 3.5 Baths

The **Stardom's** one-of-a-kind layout gives the kitchen a commanding central location – overlooking the café, gathering room, and large covered lanai. A guest suite and private owner's suite both offer privacy, natural light, and spacious walk-in closets. There is no shortage of storage in this open floor plan from the huge laundry room to the open garage space, or the optional 3-car garage.



Estate Series



# Stellar

2,483 – 2,587A/C Sq. Ft. | 3 Bedrooms | 3 – 4 Baths

Able to accommodate both entertaining and relaxed everyday living, the **Stellar** home design represents an achievement. The kitchen opens to the gathering room, café, and covered lanai, to suit both formal and informal socializing. Private spaces like the flex room, or owner's suite with large walk-in closet, let you still find "me time." In the garage, enjoy an extra bay for a golf cart or storage.



Estate Series



# Reverence

2,669 – 2,867 A/C Sq. Ft. | 3 Bedrooms | 2.5 – 3 Baths

The single-story **Reverence** home design includes 3 bedrooms, a flex room, and up to 4 bathrooms. The connected kitchen, gathering room, café, and covered lanai offer a great space for indoor/outdoor entertainment. Upgrade this area with the optional covered lanai extension or zero corner slider. The included garage storage space or optional golf-cart garage gives you the extra room you need.



Estate Series





# Renown

2,808 – 3,056 A/C Sq. Ft. | 3 Bedrooms | 3 Baths | 1 – 2 Half Baths

The **Renown** at Avondale at Avenir is known for its entertaining spaces. Enjoy the zero-corner slider and pool bath options to maximize your indoor-outdoor living space. Inside, the home boasts elegant and durable designer finishes with plenty of natural light. After entertaining your guests, retreat to the private owner's suite complete with dual closets and a spa-like bathroom.



Estate Series



# Whitestone

2,894 A/C Sq. Ft. | 4 – 5 Bedrooms | 2.5 – 4 Baths

The **Whitestone** at Avondale at Avenir gives room for everyone. The three bedrooms upstairs are complemented by a loft, perfect for a game room or second living room. The Owner's Suite is conveniently located on the first floor, along with flex space that serves as a den or fifth bedroom. The connected gathering room, café area, and kitchen with island invite everything from mealtime to homework.



Estate Series



# Millstone

3,427 A/C Sq. Ft. | 4 – 5 Bedrooms | 3.5 – 4 Baths

The **Millstone** offers 4-5 bedrooms, including a luxurious Owner's Suite on the first floor and oversized guest rooms on the second, allowing privacy and space for family members and overnight guests. Indoor/outdoor entertaining is a breeze with the zero-corner sliding glass door option. An upstairs loft, flex room, and 3-car garage complete this flexible home design.

Estate Series

